

Key

science



vocabulary worksheets

PHOTOCOPIABLE MATERIAL



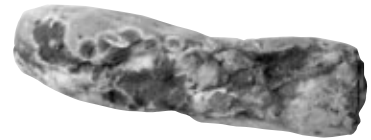
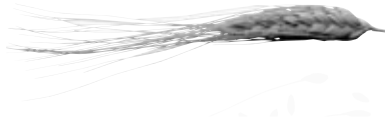


# Unit 1 Living things

Name: ..... Date: .....

## 1. Match the words to the pictures.

flower • bee • fly • mould • mushroom  
bird • pencil • wheat • bench



## 2. Circle the living things in blue and the non-living things in red.

## 3. Which are plants, animals or fungi? Complete the sentences.

a) The \_\_\_\_\_, the \_\_\_\_\_ and the \_\_\_\_\_ are animals.

b) The \_\_\_\_\_ and \_\_\_\_\_ are plants.

c) The \_\_\_\_\_ and \_\_\_\_\_ are fungi.



## Unit 2 The human body

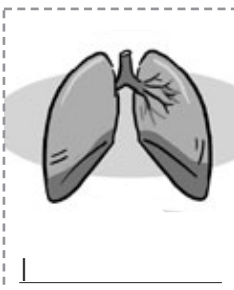

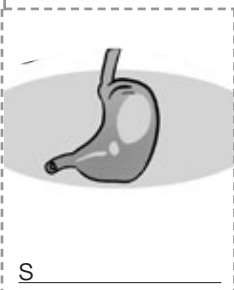


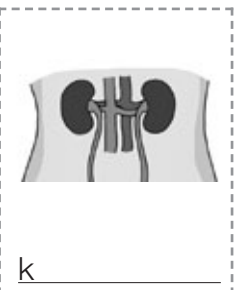
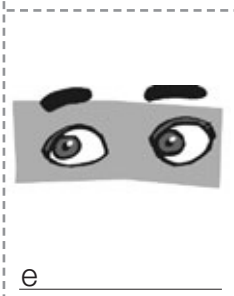



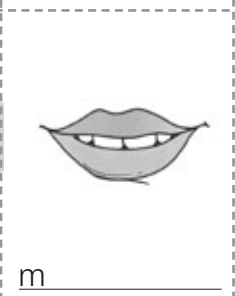

Name: ..... Date: .....

1. Look at each picture below and write the name of the parts of the body.
2. Where can you find these body parts: on a person's head, trunk or limbs? Cut out the parts of the body and glue them in the correct column.

Head

Trunk

Limbs

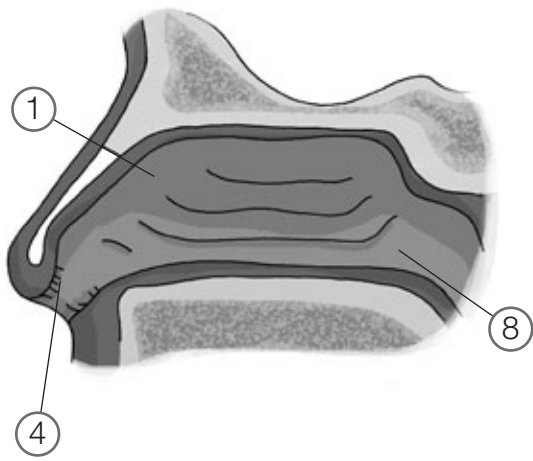
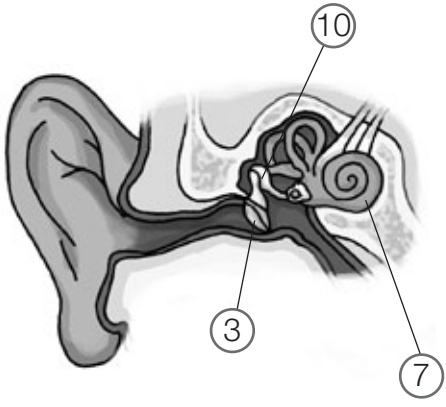
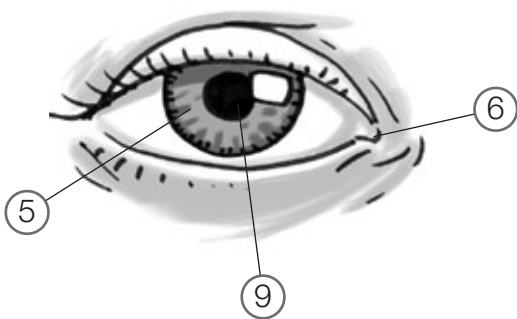
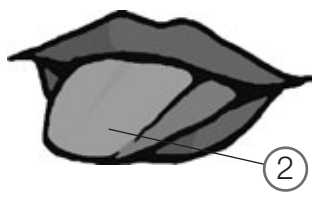
 l	 e	 s	 f	 f	 k
 e	 h	 n	 h	 m	 e



# Unit 3 The senses

Name: ..... Date: .....

1. Look at the pictures and complete the crossword.

1 N

2 A

3

4

5

6

7

8

9

10

S  
A  
L  
C  
A  
V  
I  
T  
Y

2. Which body part belongs to each sense? Complete the columns with the numbers of the pictures.

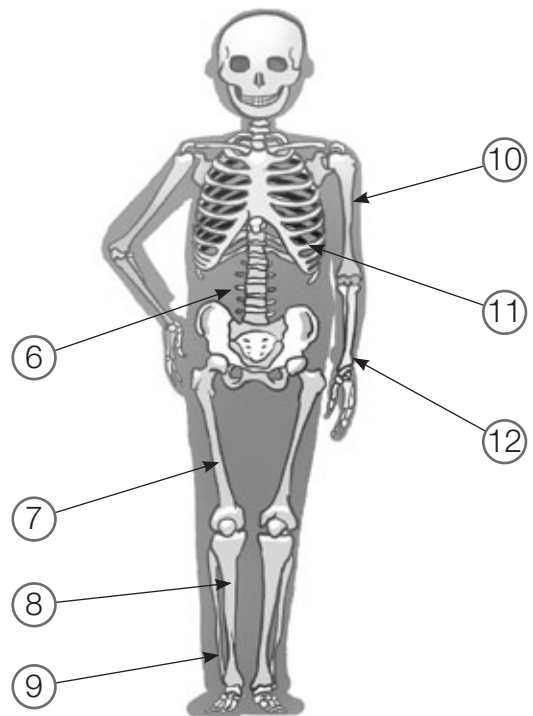
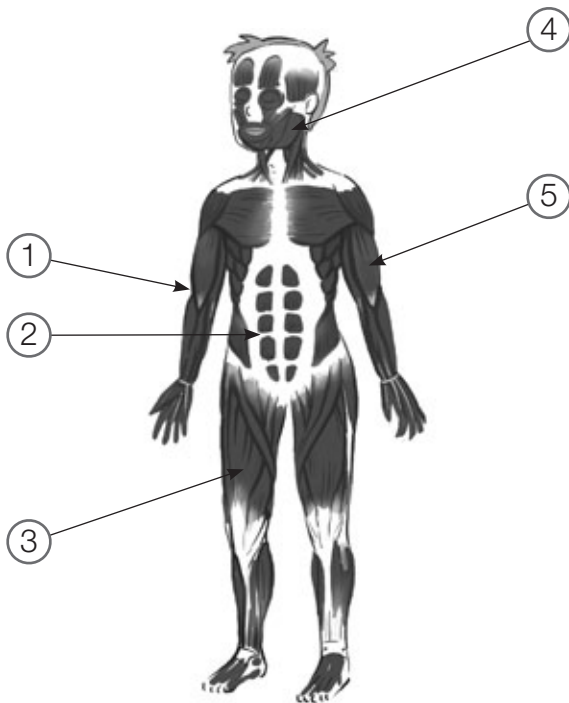
Sight	Taste	Smell	Hearing
Picture:	Picture:	Picture: 1,	Picture:



# Unit 4 The skeletal and muscular systems

Name: ..... Date: .....

1. Look at each picture and write the name of the bone or muscle.



1. t \_\_\_\_\_  
2. a \_\_\_\_\_  
3. q \_\_\_\_\_  
4. j \_\_\_\_\_

5. b \_\_\_\_\_  
6. v \_\_\_\_\_  
7. f \_\_\_\_\_  
8. t \_\_\_\_\_

9. f \_\_\_\_\_  
10. h \_\_\_\_\_  
11. r \_\_\_\_\_  
12. r \_\_\_\_\_

2. Now read these bones and muscles and write them in the correct column.

Bones →	sternum	jawbone	radius	ulna
Muscles →	deltoid	gluteus	pectorals	calf muscle

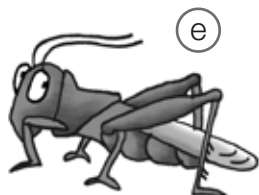
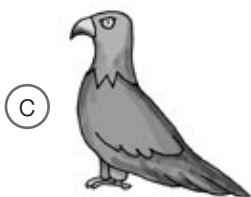
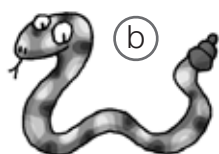
Head	Trunk	Arms	Legs

## Unit 5 Animals

Name: ..... Date: .....

**1. Look at the pictures, read the sentences and complete the crossword.**

- a. A frog ① \_\_\_\_\_ with its legs. It is an ② \_\_\_\_\_.
- b. A snake ③ \_\_\_\_\_ on land. It is a ④ \_\_\_\_\_.
- c. An eagle flies with its ⑤ \_\_\_\_\_. It is ⑥ \_\_\_\_\_.
- d. A whale swims with its ⑦ \_\_\_\_\_. It is ⑧ \_\_\_\_\_.
- e. A ⑨ \_\_\_\_\_ is an insect. It is a ⑩ \_\_\_\_\_.



**2. Choose an animal. Draw or glue a picture. Write sentences about your animal.**

[illegible]

---

---

---

---

---

---



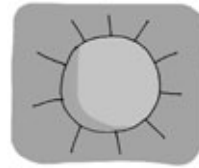
# Unit 6 Plants

Name: ..... Date: .....

1. Find the missing letters and complete the words. Match the parts of the plant to the words in the second column that are related to them.



\_ l \_ w \_ r



s \_ \_ l \_ \_ \_



\_ e a \_ \_ \_



w \_ \_ \_ \_



\_ \_ e m



s \_ \_ d s



\_ o o \_ \_



\_ o \_ \_ y



f \_ u \_ t



\_ t a \_ \_ n s

2. Use the words to complete the sentences.

- A flower has \_\_\_\_\_. A tree has a \_\_\_\_\_ stem called a trunk.
- Flowers turn into \_\_\_\_\_ when pollen grains enter the pistil.
- Plants absorb \_\_\_\_\_ and mineral salts through the roots.



# Unit 7 The Earth

Name: ..... Date: .....

## 1. Find the words in the wordsearch.

aquifer  
atmosphere  
cloud  
continent  
Europe  
groundwater  
island  
mineral  
ocean  
quartz  
rock  
water vapour

X	C	D	M	A	V	D	I	P	P	D	Z	F	K	C
E	O	S	I	S	I	C	O	R	E	N	C	O	E	E
S	N	N	N	E	U	R	O	P	E	W	V	O	X	M
S	T	Y	M	N	T	F	N	Z	N	G	V	T	P	I
S	I	T	O	A	Q	U	I	F	E	R	E	E	J	N
S	N	I	K	O	A	T	M	O	S	P	H	E	R	E
E	E	C	A	S	N	E	J	S	F	M	T	I	T	R
L	N	D	E	P	H	I	E	T	N	L	P	I	L	A
R	T	O	C	E	A	N	R	T	W	P	O	S	E	L
O	A	T	L	C	N	E	T	I	E	B	R	L	R	M
C	P	R	O	J	C	S	N	S	D	O	P	A	T	P
K	V	M	U	L	Q	U	A	R	T	Z	O	N	L	N
I	T	I	D	J	S	Q	D	E	L	E	K	D	E	E
W	A	T	E	R	V	A	P	O	U	R	M	L	Z	I
O	S	E	G	R	O	U	N	D	W	A	T	E	R	H

## 2. Answer the questions with words from the wordsearch.

- How many words have to do with water? .....
- What words have to do with air? .....
- Is quartz a rock or a mineral? .....
- Which word is a continent? .....

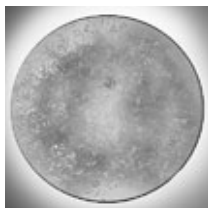
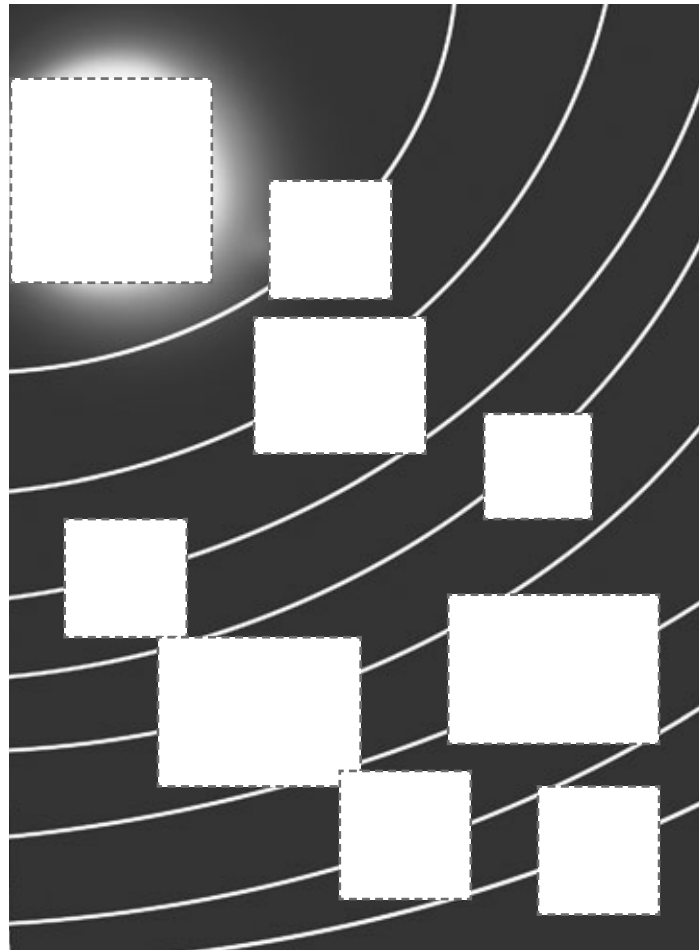
## 3. Draw the course of a river.



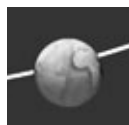
# Unit 8 The Solar System

Name: ..... Date: .....

1. Look at each picture below and write the name of the planets.
2. Cut out the pictures and glue them in their correct places in the Solar System.



S \_\_\_\_\_



E \_\_\_\_\_



U \_\_\_\_\_



S \_\_\_\_\_



Me \_\_\_\_\_



V \_\_\_\_\_



J \_\_\_\_\_



M \_\_\_\_\_



N \_\_\_\_\_

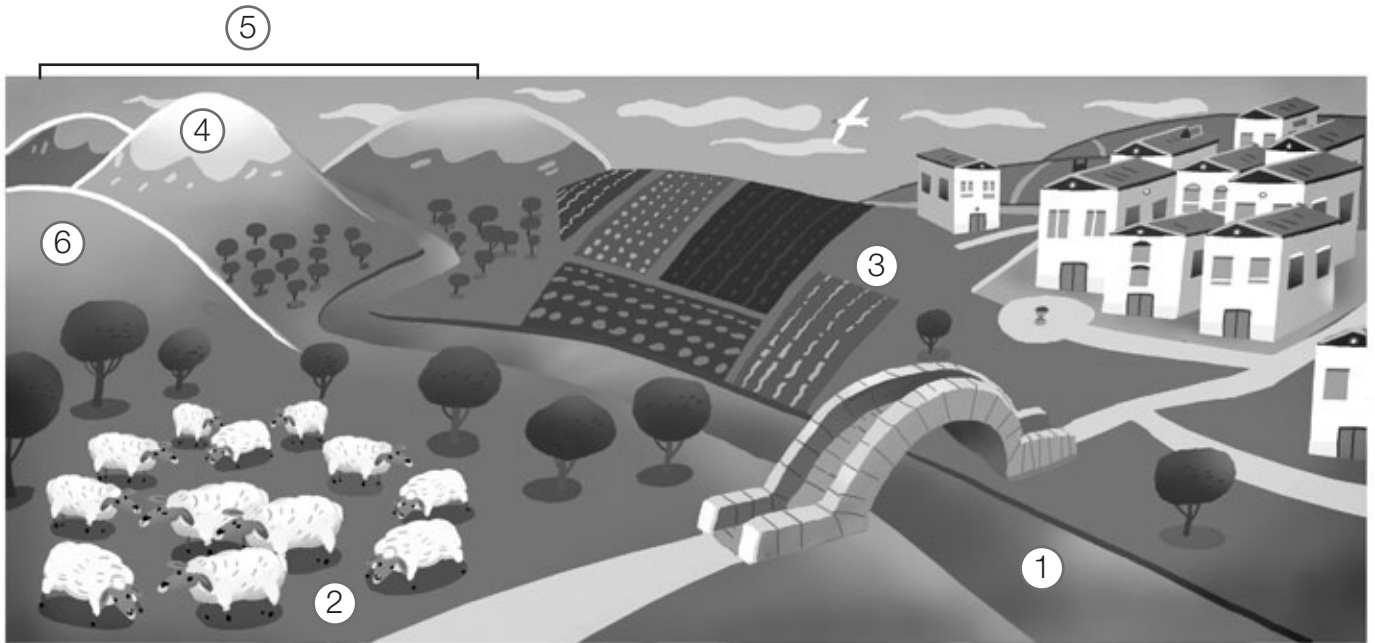


# Unit 9 Landscapes

Name: ..... Date: .....

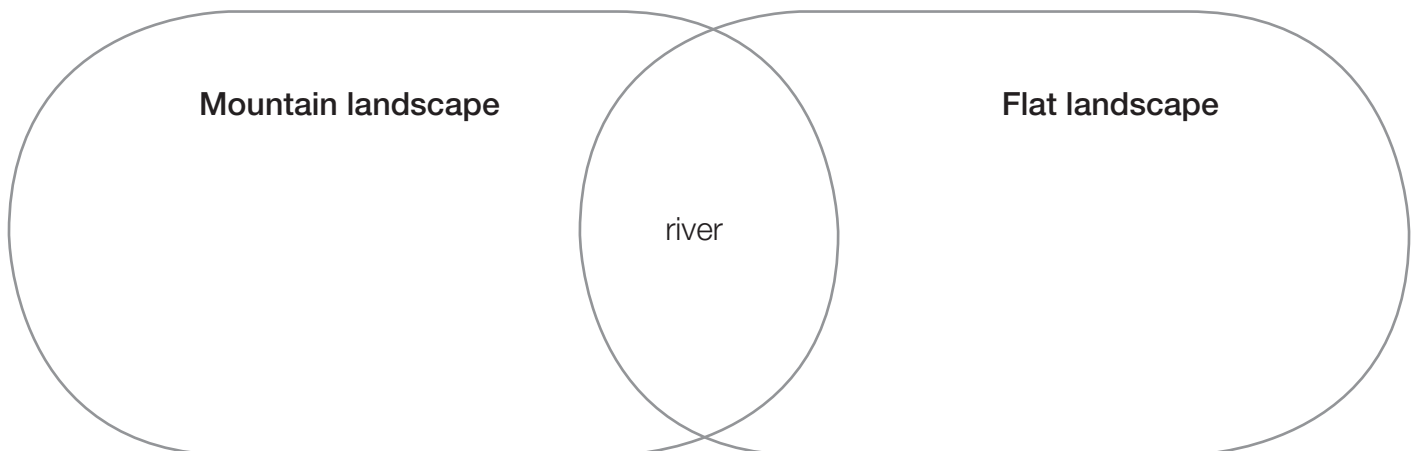
## 1. Look at the pictures and write the name.

- |                    |            |
|--------------------|------------|
| 1. r _____         | 4. s _____ |
| 2. p _____         | 5. m _____ |
| 3. f _____ l _____ | 6. h _____ |



## 2. Which feature belongs to each landscape?

plain • fertile lowlands • dam • summit • valley • hill  
river • mountain • lake • crop fields





# Unit 10 Where do we live?

Name: ..... Date: .....

## 1. What do you see? Match the words to the pictures.

building • historic centre • industrial park • traffic light • traffic sign  
letter box • skyscraper • square • litter bins



## 2. Circle the features you can see near your house in blue.

## 3. Answer these questions with words from the pictures.

- Which are areas of a city? ..... and .....
- Which words are places people live or work in offices? In a ..... or a .....
- Which words are street furniture? ....., ....., ....., .....



# Unit 11 Local government

Name: ..... Date: .....

1. Look at each picture below and write the missing words: *health, law, lights, mayor, parks, schools, taxes, vote*.
2. Are these words related to city council responsibilities or citizens' responsibilities? Cut out the pictures and glue them in the correct column.

## COUNCIL RESPONSIBILITIES

## CITIZENS' RESPONSIBILITIES



build s\_\_\_\_\_



v\_\_\_\_\_ in  
elections



offer h\_\_\_\_\_  
care



m\_\_\_\_\_ and  
council make decisions



stop at traffic  
l\_\_\_\_\_



pay t\_\_\_\_\_



follow the l\_\_\_\_\_



create and maintain  
p\_\_\_\_\_

# Unit 12 Work

Name: ..... Date: .....

1. Find the missing letters and complete the words. Then match the jobs to the types of services they belong to.



b \_ \_ d \_ i v \_ r



n \_ r \_ e



\_ o u r \_ a l i \_ t



tourist g \_ i \_ e



t e a \_ \_ e r

tour \_ \_ m  
tr \_ ns \_ ortati \_ \_  
hea \_ \_ h  
ed \_ c \_ \_ i \_ n  
co \_ \_ uni \_ a \_ ion

2. Which service would you like to work for when you are older? What job would you like to do? Draw yourself in your future job.



---

### CUT AND GLUE WORKSHEETS (Unit 2, Unit 8, Unit 11)

---

Objetivos: Etiquetar dibujos de vocabulario clave y organizarlos en categorías para facilitar su memorización.

Sugerencias didácticas

- Repasar el vocabulario de las imágenes recortables si es necesario.
- Los alumnos escriben la palabra debajo de cada imagen. Pasear por la clase ayudando a aquellos alumnos con más dificultades.
- Recortan las palabras y las pegan en las categorías correctas. Pueden trabajar solos, en parejas o en pequeños grupos.

Soluciones

Unit 2

*head*: eyes, ear, nose, mouth; *trunk*: lungs, stomach, heart, kidneys; *limbs*: hands, feet, finger, elbow

Unit 8

Sun, Mercury, Venus, Earth, Mars, Jupiter, Saturn, Uranus, Neptune

Unit 11

*council responsibilities*: build schools, offer health care, take decisions, create and maintain parks;  
*citizens' responsibilities*: vote in elections, stop at traffic lights, pay taxes, follow the laws

---

### LOOK AND WRITE WORKSHEETS (Unit 1, Unit 4, Unit 6, Unit 9, Unit 10, Unit 12))

---

Objetivos: Identificar vocabulario y usar esta información para completar frases y actividades.

Sugerencias didácticas

- Completan las palabras de vocabulario y luego usan estas palabras para completar el resto de la *worksheet* siguiendo las instrucciones.

Soluciones

Unit 1

1. a) fly; b) wheat; c) mould; d) flower; e) bench; f) bee; g) pencil; h) bird; i) mushroom
2. *blue*: fly, wheat, mould, flower, bee, bird, mushroom; *red*: bench, pencil
3. a) fly, bee, bird; b) wheat, flower; c) mould, mushroom

Unit 4

1. 1. triceps; 2. abdominals; 3. quadriceps; 4. jaw muscle; 5. biceps; 6. vertebrae; 7. femur; 8. tibia; 9. fibula; 10. humerus; 11. ribs; 12. radius
2. *head*: jawbone; *trunk*: sternum, deltoid, pectorals; *arms*: ulna, radius; *legs*: femur, gluteus, calf muscle

Unit 6

1. flower / stamens; leaves / sunlight; stem / wood; roots / water
2. stamens; woody; fruit; water, leaves; sunlight

Unit 9

1. 1. river; 2. plain; 3. fertile lowlands; 4. summit; 5. mountain; 6. hill
2. *Mountainous landscape*: mountain, valley, summit; *Both*: river, lake, dam; *Flat landscape*: plain, hill, fertile lowlands, crop fields

### Unit 10

1. a) historic centre; b) traffic sign; c) litter bins; d) industrial park; e) traffic light; f) square; g) letter box; h) building; i) skyscraper

3. a) historic centre and industrial park; b) building or a skyscraper; c) traffic light, traffic sign, letter box, litter bin

### Unit 12

1. nurse / health, bus driver / transportation, journalist / communication, tourist guide / tourism, teacher / education

2. *Model answer:* I'd like to work in communication services. I'd like to be a journalist.

---

## WORD PUZZLE WORKSHEETS (Unit 3, Unit 5, Unit 7)

---

**Objetivos:** Recordar palabras de vocabulario de forma lúdica para después usarlas para completar frases y actividades.

### Sugerencias didácticas

- Completan los crucigramas y sopas de letras con el vocabulario de la unidad. Luego, usan esas palabras para completar las actividades siguientes. Pueden trabajar individualmente o en parejas.

### Soluciones

#### Unit 3

1. 1. nasal cavity; 2. taste buds; 3. eardrum; 4. nostril 5. pupil; 6. tear gland; 7. cochlea; 8. olfactory area; 9. iris; 10. hammer

2. Sight: 5 (pupil), 6 (tear gland), 9 (iris); Taste: 2 (taste buds); Smell: 1 (nasal cavity), 4 (nostril), 8 (olfactory area); Hearing: 3 (eardrum), 7 (cochlea), 10 (hammer)

#### Unit 5

1. a) A frog *jumps* with its legs. It is an *amphibian*. b) A snake *slithers* on land. It is a *reptile*. c) An eagle flies with its *wings*. It is *oviparous*. d) A whale swims with its *fins*. It is *viviparous*. e) A *grasshopper* is an insect. It is a *herbivore*.

2. *Model answer:* I like frogs. They can jump high. They've got strong legs. They live on land and in water.

#### Unit 7

2. a) Five: aquifer, cloud, groundwater, ocean, water vapour; b) atmosphere; c) mineral; d) Europe