

## Prepositions of Place

Look at the pictures. Complete the sentences using the correct prepositions from the box.

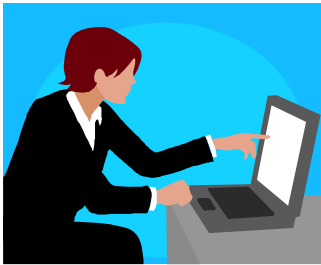
above – under – between – in – on – next to – behind



1. The small house is \_\_\_\_\_ the big house.



2. The moon is \_\_\_\_\_ the cat.



3. The computer is \_\_\_\_\_ the desk.



4. The building is \_\_\_\_\_ the two trees.



5. The moon is \_\_\_\_\_ the three houses.



6. The books are \_\_\_\_\_ the cart.



7. The train is \_\_\_\_\_ the city.